
Acorn PhotoCD

Sample Application

Introducing PhotoView

PhotoView is a PhotoCD sample application which allows you to access the images on a PhotoCD disc. Using PhotoView to view and manipulate an image you can

- choose the display resolution of the selected image
- rotate the image through 0°, 90°, 180° and 270°
- flip the image in the vertical plane prior to rotation
- export the image in a choice of image formats
- save the image, or a selected area or the image, in a choice of image formats.

Installing PhotoView on your hard disc

To install PhotoView on your hard disc:

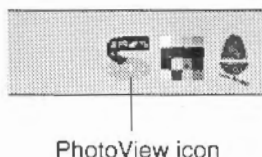
- 1 Create a new directory called SampleApp on your hard disc, and open it by double-clicking on it.
- 2 Place the SCSI and CD-ROM Utilities disc in your floppy disc drive. (This disc is supplied with both the Acorn SCSI Card and the Acorn CDFS, upgrade kits.)
- 3 Click on the floppy disc drive icon on the icon bar to display the root directory of the Utilities disc.
- 4 Drag the !PhotoView icon into the SampleApp directory on your hard disc.
- 5 Remove the floppy disc from the drive.

You can now run PhotoView from your hard disc.

Starting PhotoView

To run PhotoView from your hard disc, double-click on the !PhotoView icon in your hard disc SampleApp directory.

The PhotoView icon will appear on the icon bar:



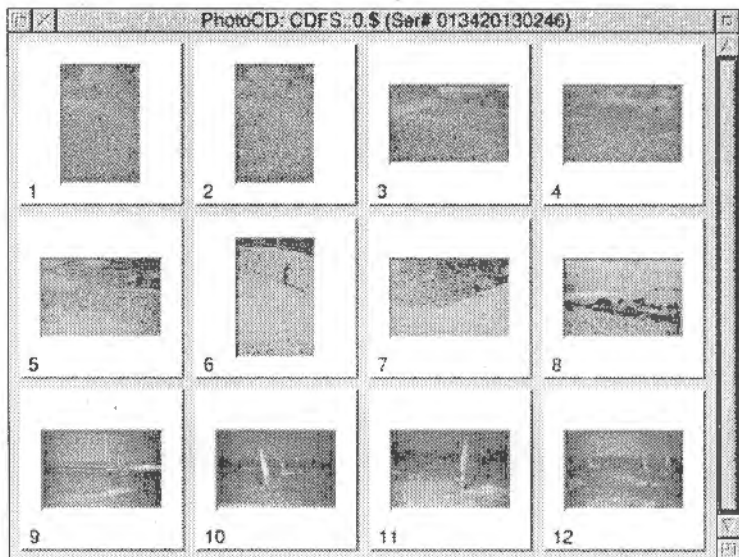
Loading the contact sheet

The contact sheet is a PhotoCD directory display which contains a number of thumbnail images. A thumbnail is a small representation of an image; there is one thumbnail for each image stored on the PhotoCD disc. Thumbnails are numbered in order corresponding to the number of the stored image on the PhotoCD disc.

To open the contact sheet, click on the PhotoView icon on the icon bar. Alternatively, if you have more than one PhotoCD available, press Menu over the PhotoView icon bar icon, and choose the directory you want from the **Source** submenu:

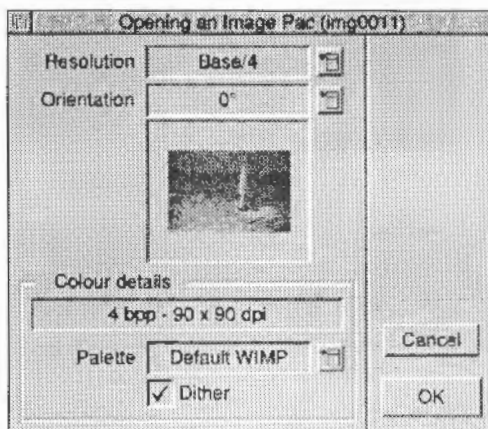
PhotoView	
Info ↕	Source
Source ↕	CDFS::0.\$
Quit	✓ CDFS::1.\$

The contact sheet for the selected PhotoCD is opened on the desktop:



Loading an image

Choose the image you wish to load by clicking on its thumbnail. This opens a control window containing the same thumbnail:



You use the control window to choose image display settings prior to displaying the image itself.

Within the control window you can set the

- resolution at which the image will be displayed
- orientation in which the image will be displayed
- palette to be used to generate the image
- use of dithering in the image generation.

The control window also displays the colour details (the colour depth in bpp, and the display resolution in dpi) of the current display mode.

Note that you cannot alter the current display mode within the control window.

Changing the image's resolution

It is a good idea to work with a low resolution image in the desktop, and then export at a higher resolution if required. The higher the resolution of an image, the larger the size of that image, and the longer it takes to load and manipulate.

To change the resolution at which the image will be displayed, click on the menu icon to the right of the box containing the current resolution setting. Choose the new resolution from the list displayed.

Changing the image's orientation

By default, orientation is set to 0° for a landscape image, and 90° or 270° for a portrait image. To change the orientation at which the image will be displayed, click on the menu icon to the right of the box containing the current orientation setting. The list of orientations displayed includes four options with which you can flip the image in the vertical plane prior to rotation. Choose the new orientation from this list.

Changing the default palette

By default, the palette used to generate the image is the default WIMP palette for the current display mode. To change the palette, click on the menu icon to the right of the box containing the current palette details, and choose another palette from the list displayed.

Enabling and disabling dithering

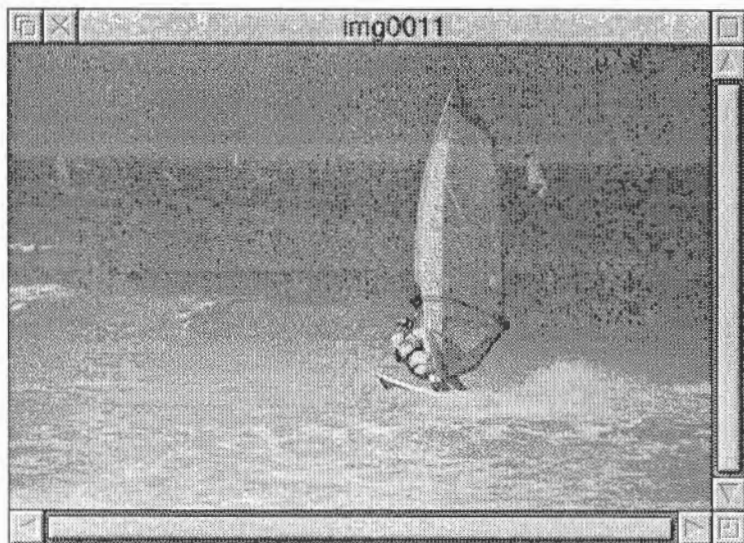
By default, dithering during image generation is enabled. If you wish to change this setting, simply click on the button displaying the current setting. The legend on this button will toggle between a tick and a cross to indicate whether dithering is enabled or disabled.

Displaying the image

Set the display options you wish to use, bearing in mind that the higher the resolution setting, the larger the size of the image, and the longer it will take to load and manipulate.

You can then display the image. If at this point you do not wish to continue, click on the control window's Cancel button.

To display the image, click on the OK button:



Once you have displayed the image, further options become available via the **Image** menu. To display the **Image** menu, click **Menu** anywhere within the displayed image window. The menu has the following options:

- **Image info** gives image details extracted from information pressed on the PhotoCD disc at the point at which the disc was pressed.

If the disc was pressed in a single session, the Last Modified box contains a dash, otherwise it contains the date when the last session was written.

If a copyright file is contained on the disc, the copyright filename is shown in the appropriate box. You can view the copyright information by clicking in the Read Rights button at the bottom of the window. If no copyright file is present, the Read Rights button is greyed out.

- **Save** displays a Save box which allows you to save the image as a sprite file appropriate to the current display mode.
- **Export** displays the Export menu which offers you a choice of formats in which to export the current image.
Resolution allows you to define the resolution at which the image is to be saved to disc.
Orientation allows you to define the orientation at which the image is to be saved to disc.
24 bit sprite allows you to save the currently selected image as a 24 bit sprite. 24 bit sprites give professional quality output on an appropriate printer (or other output device); This output is the best you can get.
- **Scale view** displays the Scale view control panel which allows you to specify the scale of the image view. You can choose from the six pre-defined scale options or type in your preferred scale. You can click on the arrowheads to make fine adjustments to the scale.

Quitting PhotoView

To quit PhotoView, press Menu over the PhotoView icon on the icon bar and choose **Quit**.

Troubleshooting

You may encounter loading and display difficulties if you do not have enough free memory for the display. You need, for example, a colour card with 24MB of free memory to display an image at 16 base and 24bbp colour depth.

Warning messages are displayed when insufficient memory is available, and PhotoView will adjust the screen display accordingly:

- If you are loading the contact sheet, PhotoView will display as many thumbnails as it is able. Those images which could not be displayed are marked N/A.
- If you are attempting to display an image, PhotoView will offer you a scrolling partial image.

If you are warned that you are short of memory, you are advised to quit PhotoView, and then to quit further running applications in order to free up more memory, before restarting PhotoView.

PhotoCD symbol is a trademark of Kodak used under license.
All other trademarks are acknowledged.

Copyright © Acorn Computers Limited 1994
Copyright © Eastman Kodak Company 1994
Published by Acorn Computers Limited
Part number 0484,609
Issue 1, February 1994

