

OEM  
PRODUCT

# TRD 7020

A Daisy Wheel Printer  
for the office and the home.



**TA**

The TRD 7020 daisy wheel printer lets you get the most from your computer, in the office or at home, through a variety of notable features.

These include:

- 20 characters per second
- 120 characters per line at 1/10" (2.54 mm)
- superb letter quality print
- an international library of print wheels
- a choice of 4 print spacings
- plotting capabilities

Perfect, in other words, for word processing.

And with these interfaces

- serial (RS 232 C) and
- parallel (centronics compatible)

the TRD 7020 is a well connected printer, compatible with all the major micro manufacturers, including Triumph Adler, IBM, Apple, Wang, Sirius, etc.

Without doubt, the TRD 7020 offers exceptional price/performance value.

### Some examples of what it can do, and how it does it:

#### Variable character spacing

```
For other applications we
For other applications we chan
For other applications we change th
For other applications we change the chara
For other applications we change the characterspacing
```

#### Variable line spacing

```
This printout use the variable line spacing
This printout use the variable line spacing
This printout use the variable line spacing
This printout use the variable line spacing
This printout: use the variable line spacing
This printout: use the variable line spacing
This printout: use the variable line spacing
```

#### Underscore for emphasis

```
The underscore is accentuated.
The underscore is accentuated.
```

#### Shadow print for contrast

```
The shadow print contrasts with the nor-
mal print.
```

## The flexible TRD 7020 – a letter quality printer for the office and the home.



#### An example of a standard type font, 10 pitch...

```
The standard type font is 'Prestige
Cubic'
```

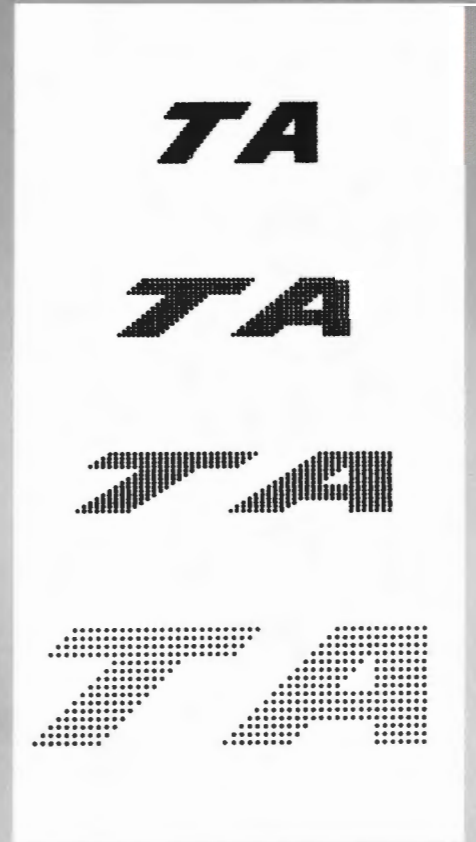
#### ...and in 12 pitch

```
The standard type font is 'Prestige
Cubic'
```

Proportional spacing for professional word processing

The proportional spacing mode makes the word processing perfect.

An example of the TRD 7020's plotting capabilities



The TRD 7020 prints calculations. For technical and scientific applications it prints formulas.

For example: The volume of a rotating body

$$V = \pi \int_{x_1}^{x_2} y^2 dx$$

or: the side of a regular body with n sides

$$s_{2n} = r \cdot \sqrt{2 - 2 \sqrt{1 - \left(\frac{s_n}{2r}\right)^2}}$$

or: the goniometric function of the total of two angles

$$\sin(\alpha + \beta) = \sin\alpha \cos\beta + \cos\alpha \sin\beta$$

This is an example of the "Mini Cubic" type face...

The type font 'Mini Cubic' is outlined for 1/12 and/or 1/15 inch.

... showing superscript and subscript

The <sup>high</sup> or <sub>low</sub> is programmable.

## Daisy Wheel Printer TRD 7020 – Technical Data:

### Type of Printer:

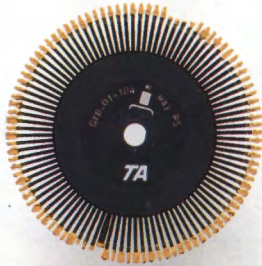
- Character printer with 100 character print wheel

### Print Speed:

- 20 characters per second in Shannon text

### Print Wheel Options:

- International print wheel library



Print wheel\*

### Columns per Line/

### Print Spacing:

- 120 characters/line at 1/10 Inch ( $\triangleq$  2.54 mm)
- 144 characters/line at 1/12 Inch ( $\triangleq$  2.12 mm)
- 180 characters/line at 1/15 Inch ( $\triangleq$  1.69 mm)
- Proportional Spacing
- Horiz. Basic Step 1/120 Inch ( $\triangleq$  0.21 mm)

### Print Buffer:

- 1500 Bytes
- Optional: 3500 Bytes

### Paper Width:

- 14 1/8 Inch ( $\triangleq$  360 mm)

### Line Width:

- 11 7/8 Inch ( $\triangleq$  302 mm)

### Tab Speed:

- 11 7/8 Inch ( $\triangleq$  302 mm per sec.)

### Line Spacing:

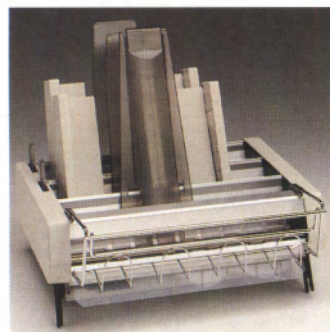
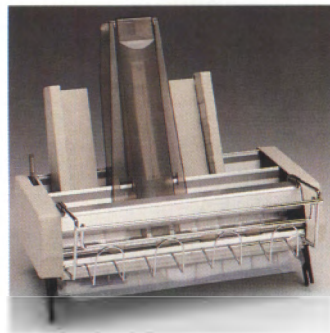
- Standard feed 1/8 Inch ( $\triangleq$  4.23 mm)
- Programmable in steps of 1/48 Inch ( $\triangleq$  0.53 mm) or 1/96 Inch ( $\triangleq$  0.26 mm)

### Form Length:

- Standard values adjustable by BCD-switch
- Form length override by software control

### Paper Transport:

- Friction roller with guide rolls
- Option: bidirectional endless form tractor
- Option: single or double sheet feeder



Automatic sheetfeeders

### Ribbons:

- Carbon: 60 000 charac.
- Multicarbon: 200 000 charac.
- Fabric: 1 million charac.



Ribbon cartridge\*

### Keys for:

- ON/OFF-Line
- Line feed
- Top-set and form feed

### LED-Displays for:

- Power-On
- ON-Line

### Feedback Contacts:

- End of ribbon
- Cover open
- Paper out, feed back on all optional paper transport

### Interfaces:

- Serial: RS 232 C (V.24)
- Parallel Centronics (IBM PC compatible)

### Selection:

- Industry compatible ESC sequences for word processing
- IBM PC compatible

### Country Versions

- max. 10 in one version

### Environmental Conditions:

- 10°C to 40°C at operation

### Line Voltage:

- 100/120/220/240 V
- 47–63 Hz
- Protection type I

### Power Consumption:

- Stand by: approx. 15 W
- Operation: approx. 40 W

### Sizes:

- 500 x 145 x 295 mm (w x h x d)

### Weight:

- Approx. 10 kilos
- 22 lbs.

\* Original supplies from TRIUMPH-ADLER. For optimum results.

DISTRIBUTOR

**TA TRIUMPH-ADLER**

TRIUMPH ADLER (U.K.) LTD.  
OEM and Special Products Division,  
Jordan House, 47 Brunswick Place  
London N1 6EG.  
Tel: 01-253 5608

E.&O.E.  
Triumph-Adler reserve the right to amend the specification of this product without prior notice being given.  
Printed in West-Germany, 01701102/385/5/17